



# HEALTH & PUBLIC SAFETY



Online Course Disclaimer: The fees for online courses may vary. The tuition stated reflects the cost at the time the catalog was created.

In-Person Course Disclaimer: Students that are registered and paid will receive first priority for enrollment in the course. Enrollment numbers must be achieved in order for course to be offered. All classes are subject to change. No refunds after class begins or for unsatisfactory grades.

A strong foundation is crucial to a successful career.  
Embark on your nursing pathway at South Florida State College.

## Why select SFSC for Nursing Assistant?

- ✓ Simple registration
- ✓ Short-term training
- ✓ Hiring assistance
- ✓ Smaller class size = more one on one with instructor
- ✓ Staff support from start to finish
- ✓ Hands-on learning
- ✓ Free tuition opportunities\*\*

## Free Tuition

\*\*We partner with several programs that offer FREE TUITION to qualified applicants.

- ✓ CareerSource Heartland - For those living in Highlands, Hardee, DeSoto, or Okeechobee, age 18 or older, and low income household.
  - 863-385-3672 ext. 1328
- ✓ Military and Veteran Benefits
  - 863-784-7128
- ✓ Panther Youth Partners - Serve those 24 years of age and under.
  - 863-784-7054
- ✓ Farmworker Career Development - Helps individuals and their households who worked in agriculture during the past two years.
  - 863-784-7166
- ✓ Vocational Rehabilitation - Helps those with disabilities get or keep a job.
  - 863-593-6261

 **Stats from a local partner:** Locally CNA's earn \$17-\$22 per hour



## Healthcare

### Nursing Assistant

Evening/Weekend Class:  
165 hours



BLS & AED Certification  
SFSC Certification  
State license via FL. Dept. of Health upon successful examination

### Get Hired and/or Continue Education



### Licensed Practical Nurse (LPN)

Completion of ATI TEAS® Exam  
1350 Contact Hours - 11 Months



SFSC Certification

### Get Hired and/or Continue Education



### Transition Program LPN to RN

Approximately 1 Year  
Become eligible to take the NCLEX exam for licensure as an RN



### Baccalaureate Post-Licensure (RN to BSN)



## Nursing Assistant Employer Partnerships

- ✓ Advent Health - 13 hospitals
- ✓ HCA Florida Highlands Hospital
- ✓ Lake Placid Health Center
- ✓ Royal Care of Avon Park
- ✓ The Palms of Sebring
- ✓ Lakeside Neurologic
- ✓ Vivo Healthcare Sebring



## Employers

- ✓ Healthcare learning competencies may be customized for a business to elevate their employees skills.
- Call Renee LaDue for a training plan to meet the needs of YOUR business.

- ✓ SFSC has employability skills training for healthcare workers to earn CEU's.

- ✓ To advertise your job opportunity for free on College Central Network and connect with SFSC students and other college students around the state, contact SFSC's Career Development Center at 863-784-7410.



## Community

- ✓ SFSC offers CPR/BLS for specific program pre-requisite or for Community Education.

- ✓ We can come to your facility. Contact us for special pricing.



## Program Contacts:

- ✓ Nursing Assistant - Mrs. Renee LaDue  
Office: University Center / 116  
Phone: 863-784-7034  
email: renee.ladue@southflorida.edu
- ✓ LPN Academic Advisor - Ms. Danielle Ochoa  
Office: Health, Science and Education Building  
Phone: 863-784-7027  
email: ochoad@southflorida.edu
- ✓ Program Navigator - Mrs. Mary von Merveldt  
Office: Health, Science and Education Building  
Phone: 863-784-7428  
email: vonmerveldtm@southflorida.edu

*Contact us today!*

**Renee LaDue**

- 📞 863.784.7034
- ✉ renee.ladue@southflorida.edu
- 📍 600 W. College Dr., Avon Park, FL 33825
- 👍 Like us on facebook at SFSCCE
- 🌐 Visit southflorida.edu/nursingassistant

**NO APPLICATION OR FAFSA REQUIRED.  
ASK US HOW TO GET STARTED  
AS SOON AS TODAY!**

**CARING FOR YOUR FUTURE!**



FOR COURSE DATES!

# SFSC Corporate & Community Education

## Nursing Assistant

**Nursing Assistant - \$1696.10\***

**In-Person**

**\*Fee includes:**

- Tuition
- Lab supplies
- Fees
- Uniform

**Additional fees required**

(Prices subject to change by vendor):

- Textbooks **\$217.85**
- BLS/CPR training **\$65**
- Non-refundable background fee **\$55.32**
- Non-refundable drug screening **\$41.99**

Subject/ Code	Campus	Building/ Room	CRN	Dates	Days/Times
VHZ0505	Highlands	UC 108	11224	Oct. 16— Dec. 17, 2024	M, T, W / 5:30—9:00 p.m. & Sunday / 7:30 a.m. - 3:30 p.m.
VHZ0505	Highlands	UC 108	26990	Jan. 8 — March 11, 2025	M, T, R / 5:30—9:00 p.m. & Sunday / 7:30 a.m. - 3:30 p.m.
VHZ0505	Highlands	UC 108	26568	March 26 — May 27, 2025	M, T, R / 5:30—9:00 p.m. & Sunday / 7:30 a.m. - 3:30 p.m.

**Nursing Assistant Competencies and Responsibilities:**

- Demonstrate basic competency in reading, writing, and passing the required background screening.
- Work under the supervision of a Licensed Practical Nurse (LPN) or Registered Nurse (RN).
- Assist patients with:
  - Personal care
  - Maintaining mobility
  - Nutrition and hydration
  - Toileting and elimination
- Take and record vital signs.
- Perform CPR if necessary.
- Assist with putting on and taking off assistive devices.
- Collect and enter basic patient data into digital records.
- Report any abnormal signs and symptoms.
- Provide additional care, including:
  - Postmortem care
  - Patient socialization and reality orientation
  - End-of-life care
  - Emergency care

**Employment Opportunities:**

- Outpatient clinics
- Hospitals
- Long-term care facilities

**Course Completion Outcomes:**

- Earn 90 hours in Introduction to Health Care and 75 hours in Nursing Assistant training.
- Gain the technical and academic knowledge required to:
  - Take the state certification exam
  - Secure employment in the field
  - Advance in Health Science careers



To access the forms to begin the enrollment process in the nursing assistant program, visit [southflorida.edu/nursingassistant](https://southflorida.edu/nursingassistant).

For more information, call 863-784-7034.



# SFSC Corporate & Community Education

## CPR/BLS and First Aid

**CPR/BLS with AED \$65**

**In-Person**

This course covers new or renewal training in Health Care Provider BLS (CPR and AED) through the American Heart Association by a certified BLS instructor and meets or exceeds the 2015 American Heart Association guidelines. Students will participate in simulated clinical scenarios and learning stations, skills practice, and skills testing. Students are required to complete and pass written exam. Upon successful completion of the course, participants will receive an email with a digital American Heart Association Course Completion Card attached. This card is valid for two years.



**To register, call 863-784-7405.**

Subject/ Code	Campus	Building/ Room	CRN	Dates	Days/Times
CCZ0507	Highlands	UC 108	11259	Aug. 29, 2024	R 5 - 9 p.m.
CCZ0507	Highlands	UC 108	11262	Sept. 17, 2024	T 5 - 9 p.m.
CCZ0507	Highlands	UC 108	11263	Oct. 29, 2024	T 5 - 9 p.m.
CCZ0507	Highlands	UC 108	11264	Nov. 2, 2024	S 8:30 - 12:30 p.m.
CCZ0507	Highlands	UC 108	11265	Nov. 14, 2024	R 5 - 9 p.m.
CCZ0507	Highlands	UC 108	11266	Dec. 4, 2024	W 8 - Noon



### Customized Training

At SFSC, we provide tailored training solutions for businesses, churches, and community groups, either at your location or on our campus. Our services include:

- Customized Training Programs: Developed to meet the specific needs of your group.
- Heartsaver Option: CPR and First Aid training tailored to your group.

Special pricing is available for confirmed group training sessions! Let us know how we can help enhance the skills and safety of your team! Email us at [corporatetraining@southflorida.edu](mailto:corporatetraining@southflorida.edu)



# SFSC Corporate & Community Education

## IV Therapy / Local Anesthesia for Dental Hygienists

### IV Therapy - \$325

Subject/ Code	Campus	Building/ Room	CRN	Dates	Days/Times
VHZ0604	Highlands	HSC 104	33966	July 30 – Aug. 2, 2024	T - F / 8 a.m. - 4:30 p.m.
VHZ0604	Highlands	HSC 104	TBA	TBA	TBA

This training program is recommended for LPNs who wish to fulfill the State of Florida 30-hour requirement for IV therapy training (following Board of Nursing rules as outlined in Chapter 64B9-12.005). This course is recognized by the Florida Board of Nursing and complies with all requirements regarding the LPN performance procedures for intravenous therapy.

#### Course prerequisite:

- Must be a licensed practical nurse (LPN) or a recent practical nurse graduate.

#### Textbook:

- The following book is required for the course: Phillip's Manual of I.V. Therapeutics: Evidence-Based Practice for Infusion Therapy, 8th Edition.

To register, call 863-784-7405.



### Local Anesthesia Administration for Dental Hygienists - \$1,000



This 60-contact hour course is designed to fulfill the requirements set by Florida Statute 466.017 for the administration of local anesthesia by dental hygienists. It serves as a certification course specifically for licensed dental hygienists in Florida.

- 30-hour online didactic component
- 14-hour observation component
- 16-hour evening clinical component

#### Course prerequisites:

- Copy of current Florida dental hygiene license
- Current CPR/BLS certification and purchase

#### Textbook:

Local Anesthesia for Dental Professional ISBN: 9780323073714 (required).

#### Other requirement:

Clinicals are required attendance at the Highlands campus in Building T1, Room 108. Clinical hours to be announced.

To register, call 863-784-7405.

Subject/ Code	Campus	Building/ Room	CRN	Dates	Days/Times
CHZ0003	Highlands	T1 / 108	TBA	Call 863-784-7032	TBA

Corporate and Community Education Department ▪ 863-784-7034 ▪ Email: [corporatetraining@southflorida.edu](mailto:corporatetraining@southflorida.edu) ▪

Online catalog: [southflorida.edu/corporatetraining](https://southflorida.edu/corporatetraining) ▪ Health Occ (Nursing, Dental) 120032 TR22; Public Service Health (EMT) 120033 TR 33; Public Service (Law Enforcement) 120037 TR26 - 10.07.24 - tg

# SFSC Corporate & Community Education

## Health Occupations

### Emergency Vehicle Operators Course - \$130

**In-Person**

Subject/ Code	Campus	Building/ Room	CRN	Dates	Days/Times
EMZ0296	Highlands	Public Safety Academy / CC101	26530	Jan. 8, 2025 plus a vehicle operators day	Wed. 8a.m. - 4 p.m. plus a 2nd day for behind the wheel.

This 16-hour course provides instruction on the proper operation of an emergency vehicle, specifically an ambulance. It meets or exceeds the State of Florida requirements ([FAC 64J-1.013](#)) for emergency vehicle operation. The course includes both classroom instruction and hands-on practical activities. To successfully complete the course, participants must pass both a written and a practical driving examination. A valid State of Florida driver's license and a minimum age of 18 are required for participation. A minimum of six students is needed to conduct the course.

For more information, contact Chris Fowler at [Chris.Fowler@southflorida.edu](mailto:Chris.Fowler@southflorida.edu) or 863-784-7278. **To register, call 863-784-7278 for dates of the vehicle operation portion and all the details need to register.**

### Advanced Cardiac Life Support (ACLS) - \$125

**In-Person**

Subject/ Code	Campus	Building/ Room	CRN	Dates	Days/Times
EMZ0205	Highlands	Public Safety Academy / CC101	TBA	Call 863-784-7278	TBA

This American Heart Association course is designed for all healthcare professionals and fulfills the requirements for license renewal and continuing medical education (CME). Participants will build upon their basic life support (BLS) skills with a focus on high-quality CPR. This 16-hour advanced course emphasizes the recognition and intervention of acute coronary syndromes (ACS), cardiac dysrhythmia, stroke, cardiac arrest, and immediate post-cardiac arrest care.

The course includes interactive learning stations to reinforce the importance of team dynamics and communication. Participants are required to have the most recent edition of the American Heart Association Advanced Cardiovascular Life Support textbook (2015 Guidelines) and complete the pre-test located inside the front cover. Upon successful completion, participants will receive a digital American Heart Association ACLS Card via email, valid for two years.

For more information, contact Chris Fowler at [Chris.Fowler@southflorida.edu](mailto:Chris.Fowler@southflorida.edu) or 863-784-7278.

**To register, call 863-784-7405.**

### Advanced Cardiac Life Support (ACLS) Renewal Course - \$100

**In-Person**

Subject/ Code	Campus	Building/ Room	CRN	Dates	Days/Times
EMZ0107	Highlands	Public Safety Academy / CC101	TBA	Call 863-784-7278	TBA

This American Heart Association course is designed for all healthcare professionals and meets the requirements for license renewal and continuing medical education (CME). Participants will enhance their basic life support (BLS) skills with a focus on high-quality CPR. This 8-hour renewal course emphasizes the recognition and management of acute coronary syndromes (ACS), cardiac dysrhythmia, stroke, cardiac arrest, and immediate post-cardiac arrest care.

The course includes learning stations to emphasize the importance of team dynamics and communication. Participants are required to have the latest edition of the American Heart Association Advanced Cardiovascular Life Support textbook (2015 Guidelines) and to complete the pre-test found inside the front cover. Upon successful completion, participants will receive a digital American Heart Association ACLS Card via email.

For more information, contact Chris Fowler at [Chris.Fowler@southflorida.edu](mailto:Chris.Fowler@southflorida.edu) or 863-784-7278.

**To register, call 863-784-7405.**



# SFSC Corporate & Community Education

## Health Occupations

### Pediatric Advanced Life Support (PALS) - \$125

In-Person

Subject/ Code	Campus	Building/ Room	CRN	Dates	Days/Times
EMZ0105	Highlands	Public Safety Academy / CC101	TBA	Call 863-784-7278	TBA

This American Heart Association course is designed for all health care workers who either direct or participate in the management of pediatric patients and meets the requirements for license renewal and continuing medical education (CME). Participants will build upon the foundation of basic life support (BLS) skills, with an emphasis on high-quality CPR. This 16-hour advanced course highlights the importance of recognition and management of respiratory and/or cardiovascular emergencies and cardiopulmonary arrest in pediatric patients. The students will participate in learning stations designed to instill the importance of team dynamics and communication. Participants are required to have the most recent edition of the American Heart Association Pediatric Advanced Life Support textbook (2015 Guidelines) and take the pre-test found in the front cover of the text. Upon successful completion of this course, participants will receive an email with a digital American Heart Association PALS Card attached. This card is valid for two years. To register, call **863-784-7405**.

### Pediatric Advanced Life Support (PALS) Renewal Course- \$75

In-Person

Subject/ Code	Campus	Building/ Room	CRN	Dates	Days/Times
EMZ0105	Highlands	Public Safety Academy / CC101	TBA	Call 863-784-7278	TBA

This American Heart Association course is designed for all health care workers who either direct or participate in the management of pediatric patients. This course meets the requirements for license renewal and continuing medical education (CME). Participants will build upon the foundation of basic life support (BLS) skills, with an emphasis on high-quality CPR. This 8-hour renewal course highlights the importance of recognition and management of respiratory and/or cardiovascular emergencies and cardiopulmonary arrest in pediatric patients. Students will participate in learning stations designed to instill the importance of team dynamics and communication. Participants are required to have the most recent edition of the American Heart Association Pediatric Advanced Life Support textbook (2015 Guidelines) and take the pre-test found in the front cover of the text. Upon successful completion of this course, participants will receive an email with a digital American Heart Association PALS Card attached. This card is valid for two years. For more information, contact Chris Fowler at [Chris.Fowler@southflorida.edu](mailto:Chris.Fowler@southflorida.edu) or **863-784-7278**. To register, call **863-784-7405**.

### Emergency Medical Technician Refresher

In-Person

Subject/ Code	Campus	Building/ Room	CRN	Dates	Days/Times
EMZ0514	Highlands	Public Safety Academy / CC101	TBA	Call 863-784-7278	TBA

This 30-hour course meets or exceeds the State of Florida, [FAC 64J-1.008](#) requirements for renewal of the Emergency Medical Technician (EMT) certification. Instruction includes classroom and skills verification required by the 1994 US DOT EMT-Basic National Standard Curriculum. Upon completion of this course, the participant will receive a certificate of completion for verification of training. For information related to dates/times this course is offered, contact Chris Fowler at [Chris.Fowler@southflorida.edu](mailto:Chris.Fowler@southflorida.edu) or **863-784-7278**.

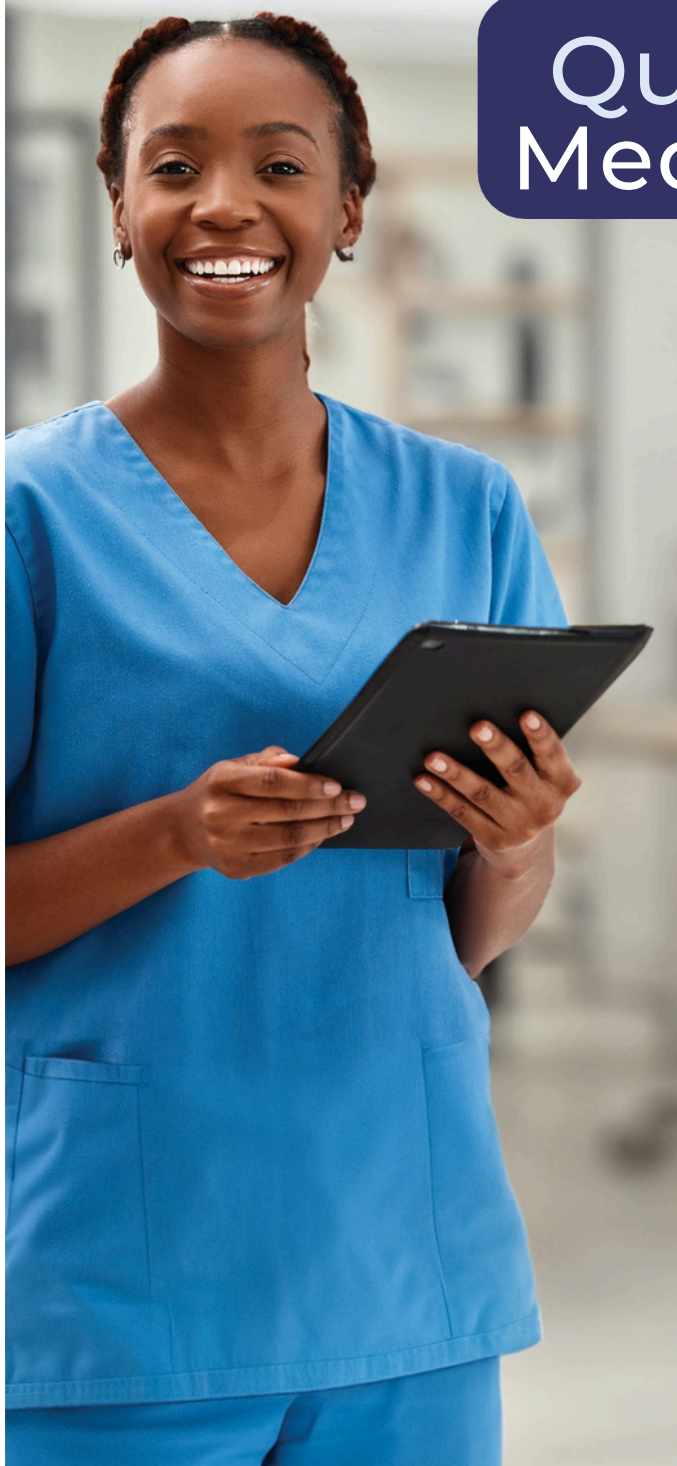
### AHA Skills Check - \$50

In-Person

Subject/ Code	Campus	Building/ Room	CRN	Dates	Days/Times
EMZ0100	Highlands	Public Safety Academy / CC101	TBA	Call 863-784-7278	TBA

This 2-hour class is the required skills completion for ACLS/PALS course work. To schedule your skills check call Chris Fowler at [Chris.Fowler@southflorida.edu](mailto:Chris.Fowler@southflorida.edu) or **863-784-7278**. Student must present documentation of successful completion of online AHA coursework. To register, call **863-784-7405**.

# Quick Online Medical Courses



## South Florida State College

### INSTRUCTOR-MODERATED COURSES

**24-HOURS \$135 per course**

- [Become an Optical Assistant](#)
- [Become a Physical Therapy Aide](#)
- [Explore a Career as a Clinical Medical Assistant](#)
- [Explore a Career as an Administrative Medical Assistant](#)
- [Explore a Career as a Pharmacy Technician](#)
- [Explore a Career in Medical Coding](#)
- [Explore a Career in Medical Transcription](#)
- [Explore a Career in Medical Writing](#)
- [Explore a Career in Nursing](#)
- [Handling Medical Emergencies](#)
- [HIPAA Compliance](#)
- [Introduction to the Medical Laboratory](#)
- [Medical Math](#)
- [Medical Terminology: A Word Association Approach](#)
- [Medical Terminology II: A Focus on Human Disease](#)
- [Spanish for Medical Professionals](#)
- [Spanish for Medical Professionals II](#)
- [Human Anatomy and Physiology](#)
- [Human Anatomy and Physiology II](#)

### COURSE BUNDLES

- [Explore a Career in Healthcare Suite](#) 72-hours \$365
- [Health Care Entrepreneurship Bundle](#) 23-hours \$140
- [Human Physiology Series](#) 48-hours \$245
- [Medical Secretary Suite](#) 96-hours \$375
- [Medical Spanish Series](#) 48-hours \$245
- [Medical Terminology Series](#) 48-hours \$245
- [Medical Writer Suite](#) 72-hours \$280

### COURSE FEATURES:



100% Online



24/7 Course access



6-week instructor moderated or 3-month self-guided formats



Learn from industry experts



Receive a certificate of completion

Watch Medical Spanish Course

Watch Medical Coding

TO LEARN MORE AND ENROLL VISIT:

Watch Medical Transcription

Watch Anatomy & Physiology



[ed2Go.com/sfsc](https://ed2Go.com/sfsc)





# ONLINE Advanced Career Training MEDICAL COURSES



## South Florida State College

### [Advanced Hospital Coding and CSS Prep](#)

100-hours \$1,895 | (Voucher Included)

### [Advanced Medical Interpreter](#)

240-hours \$3,195

### [Certified Clinical Medical Assistant \(CCMA\) plus Certified Electronic Health Records Specialist \(CEHRS\)](#)

674-hours \$3,995 | (Vouchers Included)

### [Certified Clinical Medical Assistant \(CCMA\)](#)

540-hours \$2,795 | (Voucher Included)

### [Certified Clinical Medical Assistant for the Experienced \(CMAA\)](#)

380-hours \$2,295 | (Voucher Included)

### [Certified EKG Technician](#)

170-hours \$1,995 | (Voucher Included)

### [Certified Electronic Health Records Specialist \(CEHRS\)](#)

134-hours \$1,975 | (Vouchers Included)

### [Certified Electronic Health Records Specialist with Medical Terminology](#)

194-hours \$2,325 | (Vouchers Included)

### [Sterile Processing Technician](#)

190-hours \$2,795 | (Voucher Included)

### [Certified Health Unit Coordinator](#)

120-hours \$1,395 | (Voucher Included)

### [Certified Inpatient Coder](#)

170-hours \$2,695 | (Voucher Included)

### [Certified Medical Administrative Assistant \(CMAA\)](#)

160-hours \$1,895 | (Voucher Included)

### [Certified Medical Administrative Assistant \(CMAA\) plus Medical Terminology](#)

220-hours \$1,995 | (Voucher Included)

### [Certified Medical Administrative Assistant with Certified Electronic Health Records Specialist plus Medical Terminology](#)

354-hours \$2,745 | (Vouchers Included)

### [Certified Medical Administrative Assistant with Medical Billing and Coding](#)

530-hours \$3,695 | (Vouchers Included)

### [Certified Outpatient Coder](#)

200-hours \$2,995 | (Voucher Included)

### [Optician Certification Training](#)

150-hours \$1,995

### [Certified Pharmaceutical Sales Representative](#)

110-hours \$2,195 | (Exam Included)

### [Certified Professional Medical Auditor](#)

80-hours \$1,695 | (Voucher Included)

### [Certified Risk Adjustment Coder](#)

160-hours \$1,495 | (Voucher Included)

### [Hemodialysis Technician](#)

205-hours \$3,595

### [Home Health Aide](#)

280-hours \$2,495

### [ICD-10 Medical Coding](#)

200-hours \$1,795

### [Medical Billing and Coding](#)

370-hours \$2,995 | (Voucher Included)

### [Medical Billing Specialist](#)

310-hours \$2,495 | (Voucher Included)

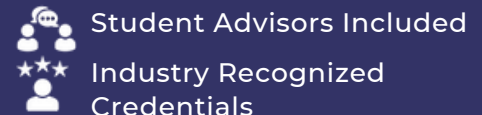
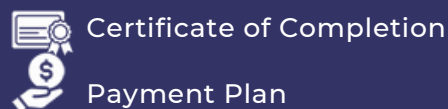
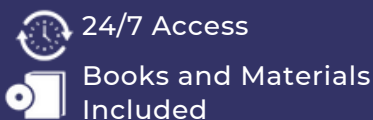
### [Medical Billing Specialist with Electronic Health Records](#)

444-hours \$3,695 | (Vouchers Included)

### [Medical Office Manager \(CPPM\)](#)

555-hours \$3,995 | (Vouchers Included)

## COURSE FEATURES:



TO LEARN MORE AND ENROLL VISIT:

[careertraining.ed2go.com/sfsc](https://careertraining.ed2go.com/sfsc)

# ONLINE Advanced Career Training MEDICAL COURSES



## South Florida State College

[Certificate in Complementary and Integrative Health](#)  
24-hours \$159

[Certificate in End of Life Care](#)  
19-hours \$135

[Certificate in Gerontology](#)  
25-hours \$159

[Certificate in Healing Environments for Body, Mind, and Spirit](#)  
16-hours \$105

[Certificate in Infectious Diseases and Infection Control](#)  
13-hours \$89

[Certificate in Legal and Ethical Issues in Healthcare](#)  
12-hours \$79

[Certificate in Pain Assessment and Management](#)  
14-hours \$79

[Certificate in Perinatal Issues](#)  
20-hours \$135

[Certificate in Spirituality, Health, and Healing](#)  
25-hours \$229

[Grammar and Writing Skills for the Health Professional](#)  
45-hours \$215

[Introduction to Natural Health and Healing](#)  
24-hours \$125

### COURSE FEATURES:



100% Online



24/7 Course  
access



6-week instructor  
moderated or 3-month  
self-guided formats



Learn from  
industry experts



Receive a certificate  
of completion

TO LEARN MORE AND ENROLL VISIT:

[ed2Go.com/sfsc](https://ed2Go.com/sfsc)

# PATH TO WELLNESS

EMPOWERING INDIVIDUALS TO TAKE CHARGE OF THEIR HEALTH



## DISCOVER ALTERNATIVE APPROACHES TO WELLNESS

South Florida State College's path to wellness offers a variety of courses aimed at enhancing and supporting health through integrative healing therapies and wellness techniques.



Many people today experience ongoing pressure without fully understanding or recognizing it. The notion of being "crazy busy" is often seen as a badge of honor, but it can have detrimental effects on your well-being. In the **Self-Care** course, you will gain an understanding of self-care and its relationship to your overall health. You will also learn simple strategies to combat stress and its negative impact on your body, enabling you to create your own self-care routines.



The **Mindfulness Meditation** course teaches you how to recognize when stress is beneficial and when it becomes detrimental. You will explore the concept of mindfulness meditation and its ability to alleviate stress. The main focus is to empower you to make more skillful lifestyle choices that effectively reduce stress.



The **Holistic Healing** course delves into the mind-body connection and energy healing. It explores the principles of alternative, holistic, and integrative medicine, which have deep roots in various healing traditions spanning thousands of years. Learn about the benefits of combining the external, physical, and technological advancements of medicine with the internal, nonphysical exploration of healing.

**THIS PROGRAM IS OFFERED TO BUSINESSES AND ORGANIZATIONS  
IN A CLASSROOM SETTING OF 8 OR MORE EMPLOYEES!**

**FOR MORE INFORMATION:**

**Corporate and Community Education**

**863-784-7466 | [corporatetraining@southflorida.edu](mailto:corporatetraining@southflorida.edu)**

# Emergency Management

<https://catalog.mindege.com/southflorida>

## EMERGENCY MANAGEMENT

Emergency management is an expanding field, and emergency managers play a critical role in protecting communities at the local, state, and national levels.



Emergency management supports community efforts to mitigate against, prepare for, respond to, and recover from threats and hazards.



Emergency management is a critical and expanding field, and emergency managers are playing an increasingly vital role.



These workers will be needed across the whole community, including the private sector, the public sector, and all levels of government.

### **Emergency Management Courses:**

- **AEM®/CEM® Prep Course (U.S. version)**  
30-hours \$399 Access Time: 180 days
- **Introduction to Emergency Management in the U.S.**  
10-hours \$199 Access Time: 180 days

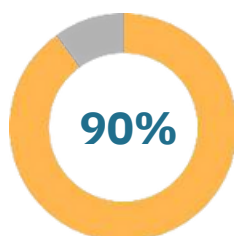
**Click on course title in orange to access the course.**

### **Why Emergency Management Training?**

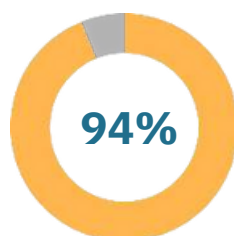
In an age of growing threats—from cyber attacks to natural disasters—emergency managers are in increasingly high demand. Recent risks like wildfires, pandemics, and flooding all highlight the need for effective management before, during, and after a crisis. The world needs more emergency managers, and MindEdge wants to help you answer the call. Whether you are studying emergency management for the first time, preparing for a new career or job role in emergency management, or seeking to refresh their knowledge of foundational concepts, our Emergency Management courses are guaranteed to better prepare you for any threat or hazard that comes your way.

### **Learners agree that our online courses:**

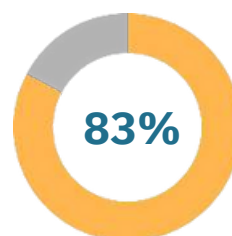
Are Effective



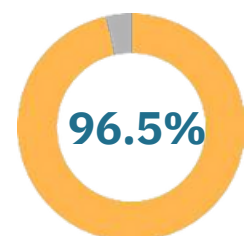
Meet Learning Objectives



Had a positive effect on their career/life



Worth Recommending to a Friend



\*Based on 2019-2020 MindEdge Learner Feedback surveys.

# SFSC Corporate & Community Education

## Public Safety

### Security Guard Certification, Class D - \$200

In-Person

Subject/ Code	Campus	Building/ Room	CRN	Dates	Days/Times
VCZ0800	Highlands	Criminal Justice	TBA	Call 863-784-7285	TBA

This 40-hour course is required to work as a State of Florida Licensed Security Guard, with a Class D License. Topics covered will include patrol techniques, first aid CPR, terrorism, Florida Statutes, and those mandated by the Department of Agriculture. **YOU MUST REGISTER BEFORE THE START OF THE COURSE TO ATTEND.** To register, call 863-784-7405. For more information, contact the Criminal Justice Academy at 863-784-7285.

### Concealed Weapons Permit - \$55

In-Person

Subject/ Code	Campus	Building/ Room	CRN	Dates	Days/Times
VCZ0040	Highlands	Criminal Justice	TBA	Call 863-784-7285	TBA

This four-hour course is required to carry a concealed firearm in Florida. Topics covered will include Florida Statutes, use of deadly force, carry restrictions, and a live-fire exercise. Everything for the course will be provided. **YOU MUST REGISTER BEFORE THE START OF THE COURSE.** For more information and to request dates for future classes, contact the Criminal Justice Academy at 863-784-7285 or visit our website at [southflorida.edu/publicsafety](http://southflorida.edu/publicsafety).

### Live Range Training for Concealed Weapons Permit Holders - \$65

In-Person

Subject/ Code	Campus	Building/ Room	CRN	Dates	Days/Times
VCZ0042	Highlands	Criminal Justice	TBA	Call 863-784-7285	TBA

This four hour course is designed to provide training to anyone who already has a valid concealed weapons permit. Instruction will include basic weapons handling, marksmanship, live-fire exercises, care and cleaning of a handgun. Authorized weapons include revolvers or semi-automatic handguns in calibers .22, .25, .32, .380, 9mm, .38, .357, .40, .45, and .44. Handguns chambered in rifle calibers or fully automatic weapons will not be allowed. Anyone interested in taking this course must bring a handgun and 50 rounds of factory ammunition; all other materials will be supplied. **YOU MUST REGISTER BEFORE THE START OF THE COURSE. At the start of class, you MUST present your concealed weapons permit.** For more information, to request dates for future classes, the equipment list, and maps to the range, contact the coordinator at the Criminal Justice Academy at 863-784-1285 or visit our website at [southflorida.edu/publicsafety](http://southflorida.edu/publicsafety). \*Class will be held at SFSC CJA Firearms Range located at 12700 Arbuckle Creek Rd. Sebring, FL 33870

Turn your **PASSION**

into a **PROFESSION**

## Online Courses For A Career In **FITNESS TRAINING**

These online courses will put you at the forefront of fitness training and technology while gaining the knowledge you'll need to earn your certification with confidence.

### South Florida State College

[ACE Personal Trainer with Fitness and Health Internship](#)  
210-hours \$1,895

[ACSM Certified Exercise Physiologist with Fitness and Health Internship](#)  
210-hours \$1,895

[ACSM Personal Training with Fitness and Health Internship](#)  
210-hours \$1,895

[AFAA Group Fitness Instructor](#)  
60-hours \$695 (Vouchers Included)

[NASM Certified Nutrition Coach](#)  
80-hours \$1,295 (Exam Cost Included)

[NASM Certified Nutrition Coach + Weight Loss Specialist \(CNC, WLS\)](#)  
160-hours \$1,995 (Vouchers Included)

[NASM Certified Personal Trainer and Exam Preparation Program](#)  
80-hours \$1,295 (Voucher Included)

[NASM Certified Personal Trainer \(Spanish\)](#)  
80-hours \$1,295 (Voucher Included)

[NASM Certified Personal Trainer + AFAA Group Fitness Instructor](#)  
140-hours \$1,895 (Exam Cost Included)

[NASM Certified Personal Trainer + Corrective Exercise](#)  
140-hours \$1,895 (Voucher Included)

[NASM Certified Personal Trainer + Performance Enhancement](#)  
140-hours \$1,895 (Vouchers Included)

[NASM Certified Weight Loss Coach \(CPT, CNC, WLS\)](#)  
240-hours \$3,395 (Vouchers Included)

[NASM Certified Weight Loss Specialization \(WLS\)](#)  
80-hours \$1,295 (Vouchers Included)

[NASM Corrective Exercise Specialist \(CES\)](#)  
60-hours \$695 (Exam Cost Included)

[NASM Performance Enhancement Specialist \(PES\)](#)  
60-hours \$695 (Exam Cost Included)

[NCSF Sports Nutrition Specialist](#)  
70-hours \$595 (Voucher Included)

[NCSF Certified Strength Coach](#)  
70-hours \$595 (Voucher Included)

#### COURSE FEATURES:



24/7 Access



Books and materials included



Certificate of Completion



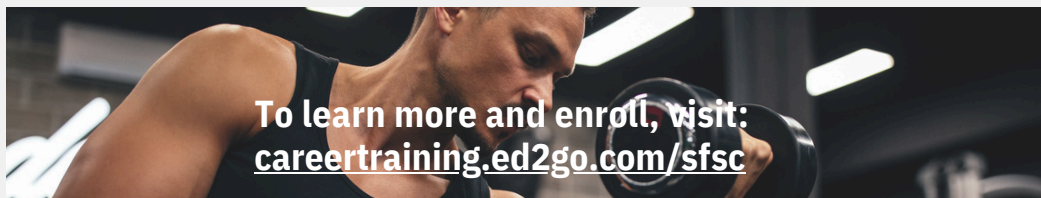
Payment Plan Available



Student Advisors included



Industry recognized certifications



To learn more and enroll, visit:  
[careertraining.ed2go.com/sfsc](http://careertraining.ed2go.com/sfsc)

# CUSTOMIZED CORPORATE *Training*

*SFSC's expert-led sessions provide hands-on learning, practical insights, and valuable opportunities to help your employee's excel. Empower Your Workforce with Tailored Learning Solutions!*

- **Tailored Training:** We customize courses to meet your specific business objectives, whether it's enhancing leadership, technical skills, or compliance.
- **Flexible Delivery:** Choose from onsite - your location or any of SFSC's campuses, virtual, or blended learning options to fit your team's schedule and learning style.
- **Expert Instructors:** Our trainers are industry professionals who bring practical knowledge and real-world experience to each session.



**LEADERSHIP &  
SOFT SKILLS**

**TECHNICAL &  
VOCATIONAL**

**HEALTH &  
SAFETY**



Call Us  
**863-784-7466**

Email us at  
**corporatetraining@  
southflorida.edu**





Enjoy a Rewarding Career!

ADVANCED CAREER TRAINING

# Veterinary CAREER



Learn anywhere, any time!

## South Florida State College

### COURSE FEATURES:



24/7 Access



Books and materials  
included



Certificate of Completion



Payment Plan Available



Student Advisors included



Industry recognized  
certificates

#### Veterinary Assistant

210-hours \$2,495

This online course will prepare you to become a productive member of a veterinary team.

#### Veterinary Office Manager

450-hours \$3,995

Gain valuable knowledge to start a career on the non-clinical side of the veterinary clinic and prepare for advancing into office management.

#### Veterinary Assistant with Horse Care Management

610-hours \$3,995

Veterinary Assistant with Horse Care Management teaches the specialized skills that stables, equestrian centers, and large animal veterinary facilities look for. Together, these courses provide the comprehensive training needed to be a veterinary assistant with an additional focus on horse care techniques.

## Our Pets Need Healthcare Too!



To learn more and enroll, visit:

[careertraining.ed2go.com/sfsc](https://careertraining.ed2go.com/sfsc)

Watch Veterinary  
Assistant Video





# SFSC Corporate & Community Education

Serving Highlands, Hardee and DeSoto counties for almost 60 years!

## Career Path Planning

01

### Self-Assessment

- Resume Building.
- Dress for Success.
- Practice Interview Skills.
- Know your strengths and weaknesses.

02

### Research Career Options

- Explore the right career path for you!
- Take a free assessment at [sfsc.kuder.com](http://sfsc.kuder.com).  
Activation Code: J6568273NVJ

03

### Build Skills to Succeed

- Identify short-term training and long-term goals, including soft skills and technical skills.
- No college application or FAFSA required for these short-term programs.

04

### Network Building

- Explore Job Opportunities: Develop and maintain industry connections through networking events, career fairs, professional organizations, and a strong LinkedIn presence.
- Keep up with continuing education and professional development.



## SFSC Campus and Center Locations

### Highlands Campus

600 West College Drive  
Avon Park, FL 33825

### DeSoto Campus

2251 N.E. Turner Avenue  
Arcadia, FL 34266

### Hardee Campus

2968 U.S. 17 North  
Bowling Green, FL 33834

### Lake Placid Center

500 East Interlake Boulevard  
Lake Placid, FL 33852



### Crews Center

Truck Driving Academy  
Construction Academy

200 U.S. Highway 27 South  
Avon Park, FL 33825

 [southflorida.edu/corporate-training](http://southflorida.edu/corporate-training)

South Florida State College is an equal access/equal opportunity institution. South Florida State College is accredited by the Southern Association of Colleges and Schools Commission on Colleges (SACSCOC) to award the associate and baccalaureate degree. Contact SACSCOC at 1866 Southern Lane, Decatur, Georgia 30033-4097 or call 404-679-4500 for questions about the accreditation of South Florida State College.